

Drain: PEBBLEBROOK DRAIN **Drain #:** 191
Improvement/Arm: PEBBLEBROOK - SECTION 1
Operator: JPH **Date:** 2-24-04
Drain Classification: Urban/Rural **Year Installed:** 1986

GIS Drain Input Checklist

- Pull Source Documents for Scanning JPA 2-25
- Digitize & Attribute Tile Drains N/A
- Digitize & Attribute Storm Drains JPA 2-25
- Digitize & Attribute SSD JPA 2-25
- Digitize & Attribute Open Ditch N/A
- Stamp Plans JPA 2-25
- Sum drain lengths & Validate JPA 2-25
- Enter Improvements into Posse JH 2-25
- Enter Drain Age into Posse July 4-23
- Sum drain length for Watershed in Posse July 4-23
- Check Database entries for errors JPA 2-25

Gasb 34 Footages for Historical Cost
Drain Length Log

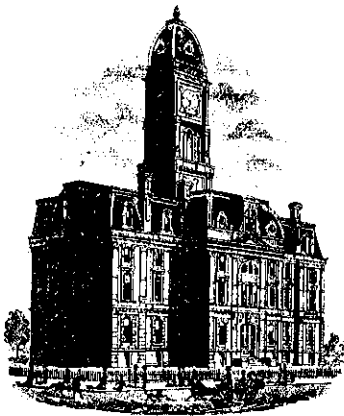
Drain-Improvement: PEBBLE BROOK DRAIN - PEBBLE BROOK - SECTION 1

Drain Type:	Size:	Length <small>SURVEYOR'S REPORT</small>	Length (DB Query)	Length Reconcile	If Applicable	
					Price:	Cost:
SSD	6"	1095'	1095'	Ø	2.00	2,190.00
RCP	12"	571'	571'	Ø	7.25	4,139.75
	15"	151'	151'	Ø	9.50	1,434.50
	18"	925'	925'	Ø	10.50	9,712.50

Sum: 2,742' 2,742' Ø \$17,476.75

Final Report: _____

Comments:



SURVEYOR'S OFFICE
Hamilton County

Kenton C. Ward, Surveyor

776-9626

Noblesville, Ind. 46060 June 8, 1984

TO: Hamilton County Drainage Board

RE: PebbleBrook Drain, Section 1

Attached is a petition, assessment roll and plans for the Pebble Brook Drain, Section 1. Upon review of the petition, I believe it to be in proper form. Upon inspection of the site and the plans I believe the proposed drain to be practicable; will improve the public health, benefit a public highway and be of public utility; and costs, damages and expenses of the proposed drain will probably be less than the benefits accruing to the owners of land likely to be benefited.

The proposed drain will consist of the following:

12"RCP	543ft
15"RCP	230ft
18"RCP	900ft
4" Subsurface Drain	280ft
6" Subsurface Drain	1095ft

The total length will be 3048ft .

Upon considering the benefits for each tract I believe each to be benefited equally. With an assessment of \$2.00/acre for streets and \$20.00 per lot or block, the total yearly assessment for this section of the PebbleBrook Drain will be \$ 633.94 .

I recommend a 15' easement each half on lots 28,29 and 10 to 17. Presently the easement is 10' each hlf.

A hearing should be set for August 13, 1984.

CERTIFICATE OF COMPLETION AND COMPLIANCE

TO: HAMILTON COUNTY SURVEYOR

RE: Pebble Brook - Section I

I hereby certify that:

- 1.) I am a Registered Land Surveyor in the State of Indiana,
- 2.) I am familiar with the plans and specifications for the above referenced subdivision,
- 3.) I have personally observed and supervised the completion of the Drainage Facilities for the above referenced subdivision, and
- 4.) To the best of my knowledge, information and belief, the Drainage Facilities within the subdivision has been installed and completed in conformity with all plans and specifications.

Signature:  Date: May 14, 1986

Type or Printed Name: John V. Schneider

Business Address: 3675 N. Post Road, Indianapolis, Indiana 46226

Telephone: (317)898-8282

INDIANA REGISTRATION NUMBER

S0115

SEAL



SURVEYOR'S OFFICE
Hamilton County

Kenton C. Ward, Surveyor

773-6110 Ext. 19

Noblesville, Ind. 46060 August 29, 1988

To: Hamilton County Drainage Board

Re: Pebble Brook Drain, Section 1

I have inspected the drainage facilities for the Pebblebrook Drain, Section 1 and have found them to be complete and acceptable. The project engineer has submitted the Certificate of Completion and Compliance and "As-Built" Drawings on reproducible mylar of the drainage system.

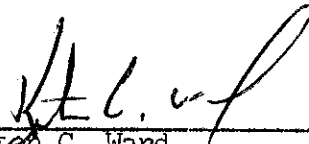
Many changes were made in the plan during the construction of this section. The changes were not approved but are being accepted as the regulated drain. The developers engineer has submitted as-built plans dated 5/25/88 along with calculations (dated 1-14-88) to verify the changes. The Board should make note that according to the calculations, structures 101 and 102 in Sand Brook Place will cause standing water during a 10 year storm event. The depth of the water will be such that it will top the high point in the street to the north and flow to structures 105 and 107. To reduce this problem, a swale has been constructed between lots 25 and 26 to carry overflow.

The changes mentioned above include both differences in pipe sizes and locations. The as-built from Schneider Engineering shows the drain as constructed. The regulated drain includes the RCP storm sewer and the 6" sub-surface drain (SSD). The new lengths of drain is as follows:

6" SSD	1095 ft	15" RCP	151 ft
12" RCP	571 ft	18" RCP	925 ft

The new total length involved is 2742 feet. The swales over or along side of the tile lines along with the detention area between lots 27 and 29 are to be maintained with the tile system.

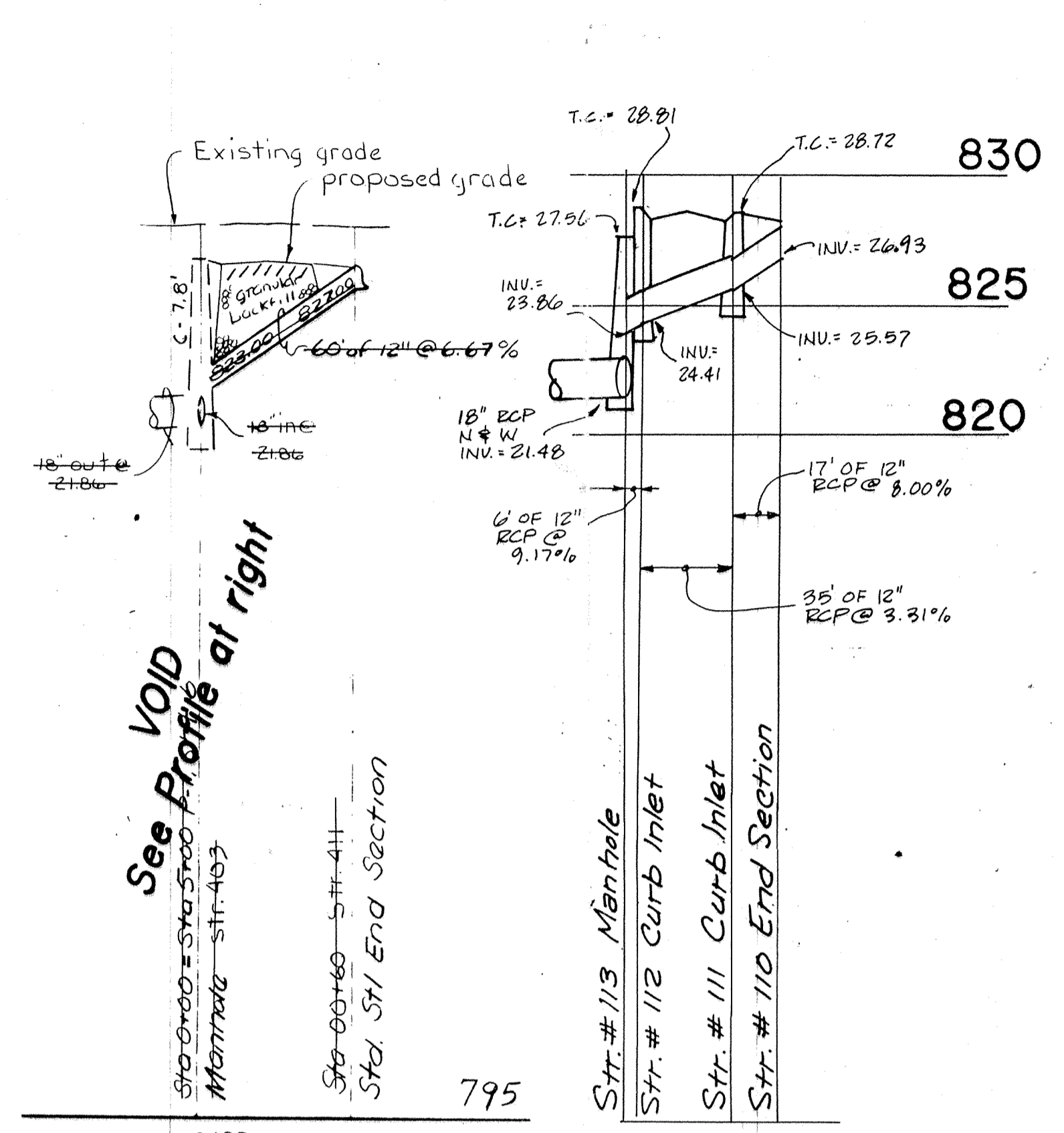
At this time I recommend the Board approve the drainage facilities as constructed. I further recommend that the non-enforcement request for this plat be approved by the Board. The non-enforcement covers Pebblebrook Sections 1,2 and 3 and the replats for Sections 1 and 2.



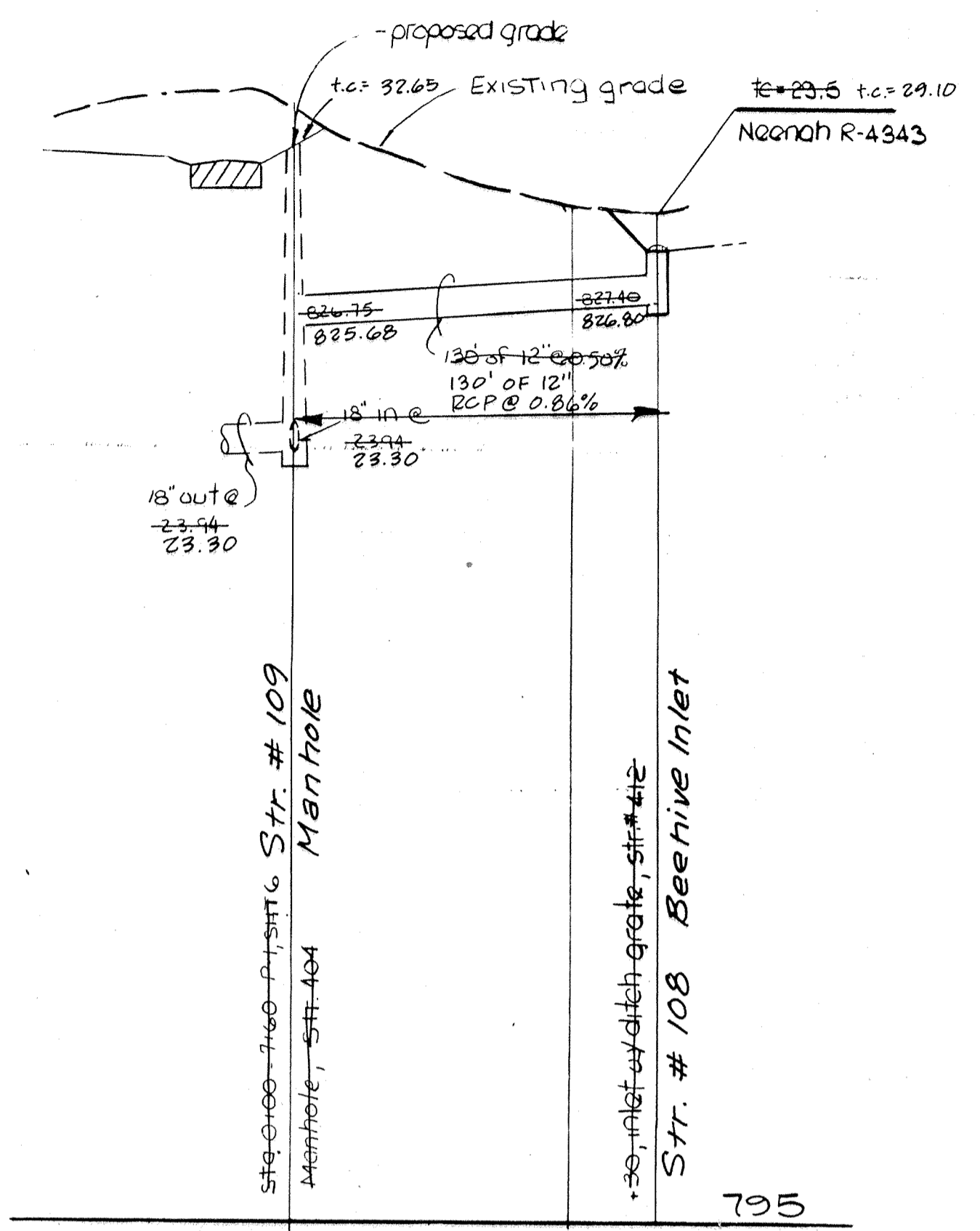
Kenton C. Ward,
Hamilton County Surveyor

KCW/jh

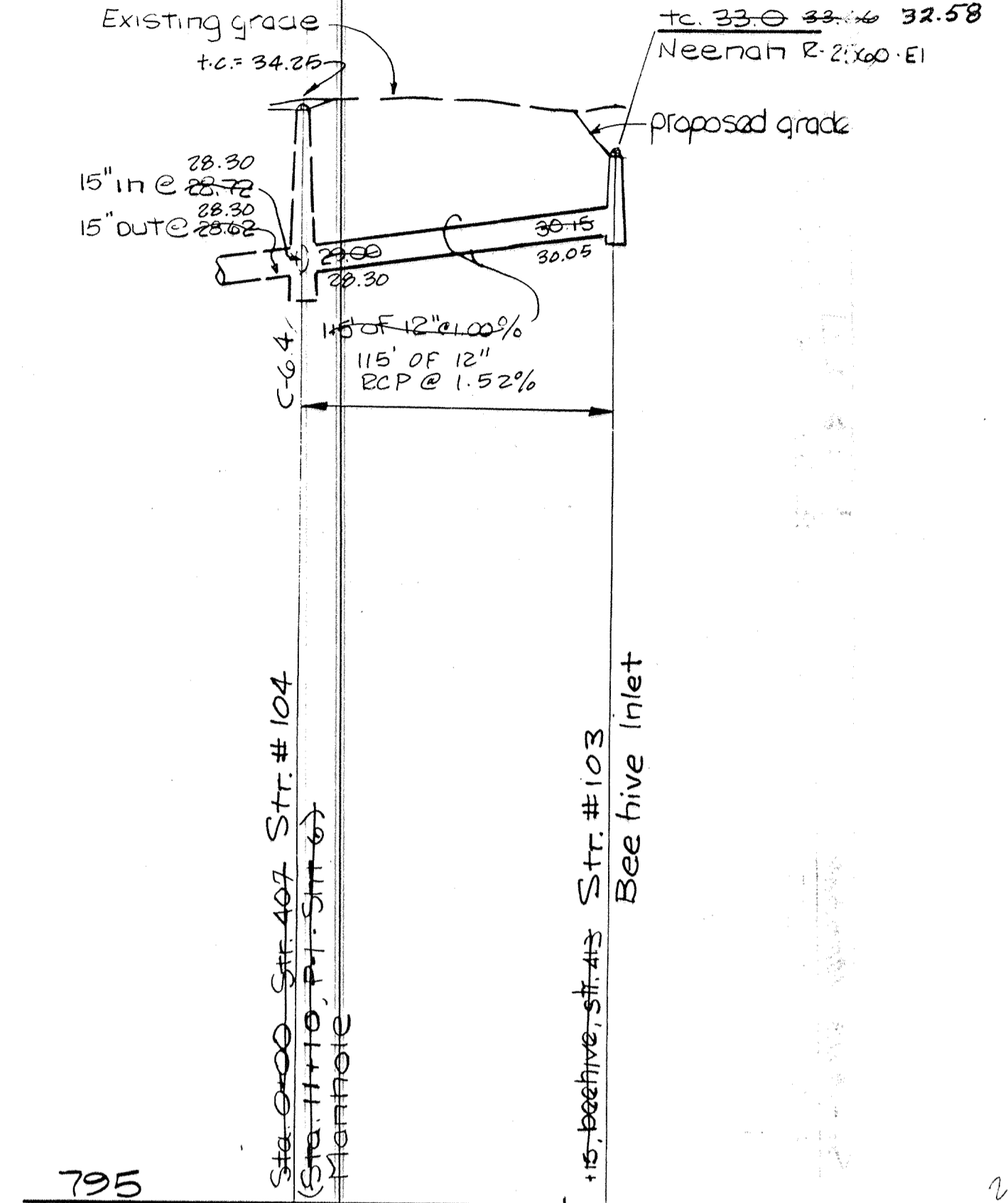
FILED
SEP 12 1988
HAMILTON COUNTY DRAINAGE BOARD
Margaret A. Stalton
SECRETARY



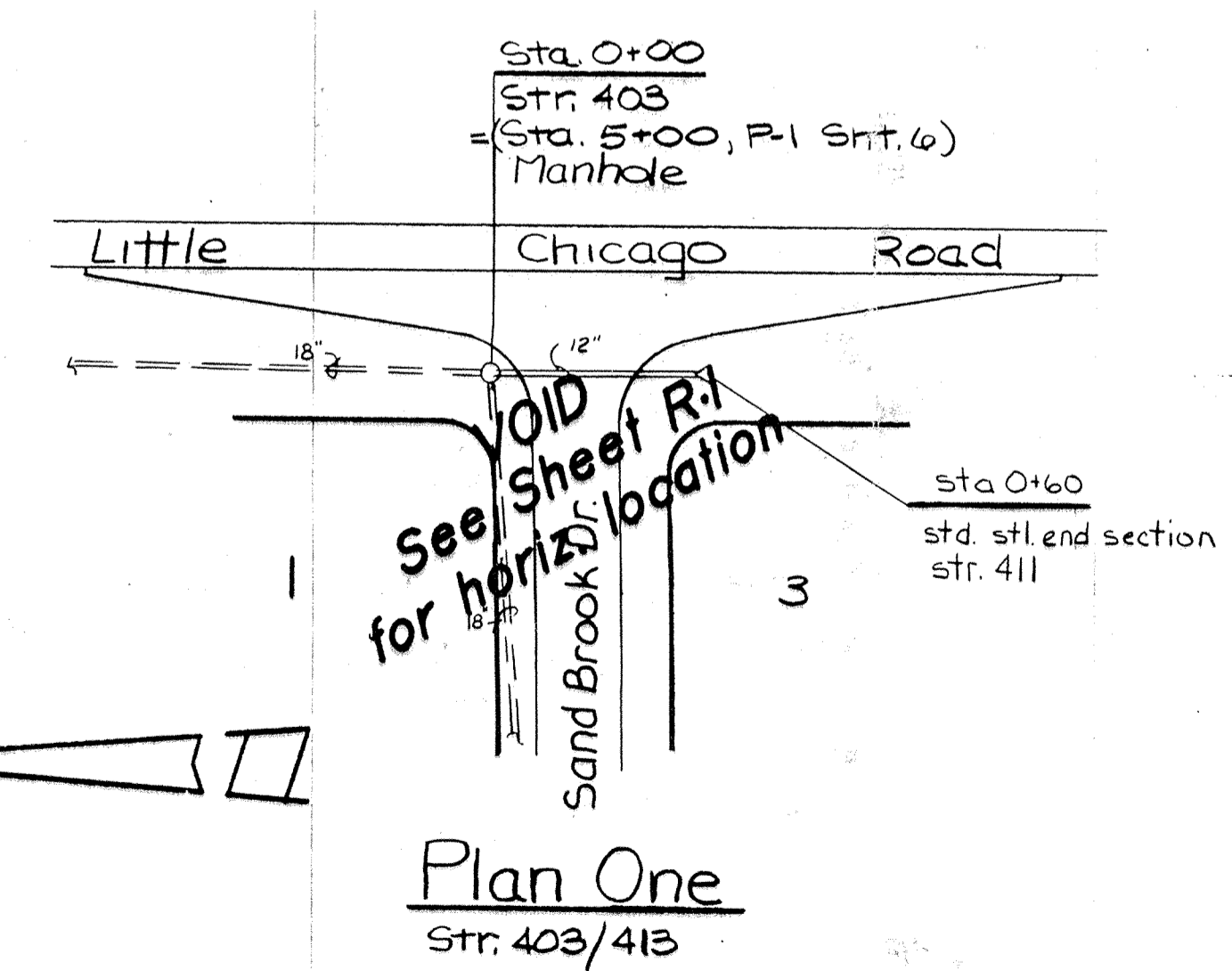
Profile One
"AS-BUILT PROFILE"



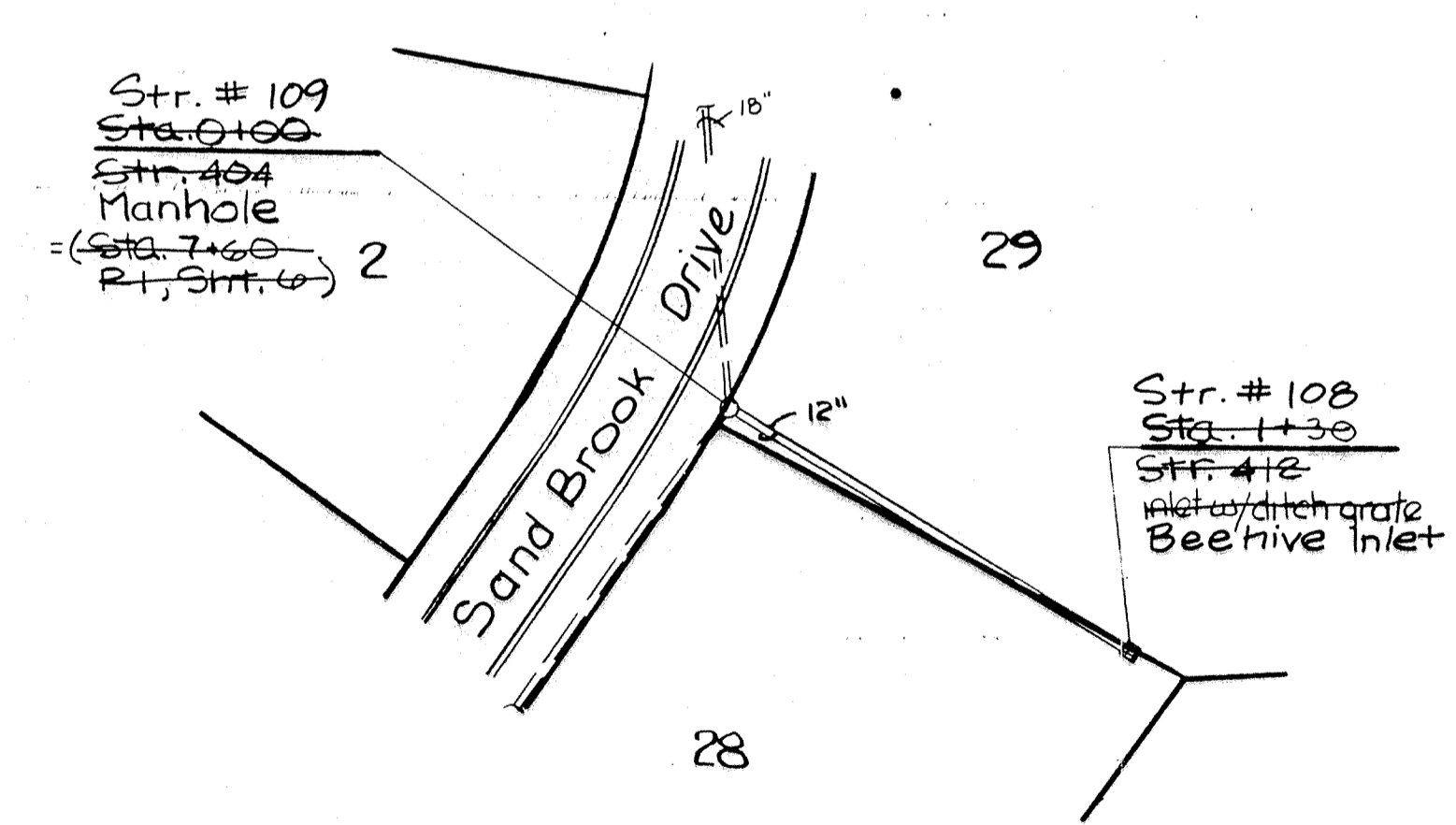
Profile Two
Str. 404/414



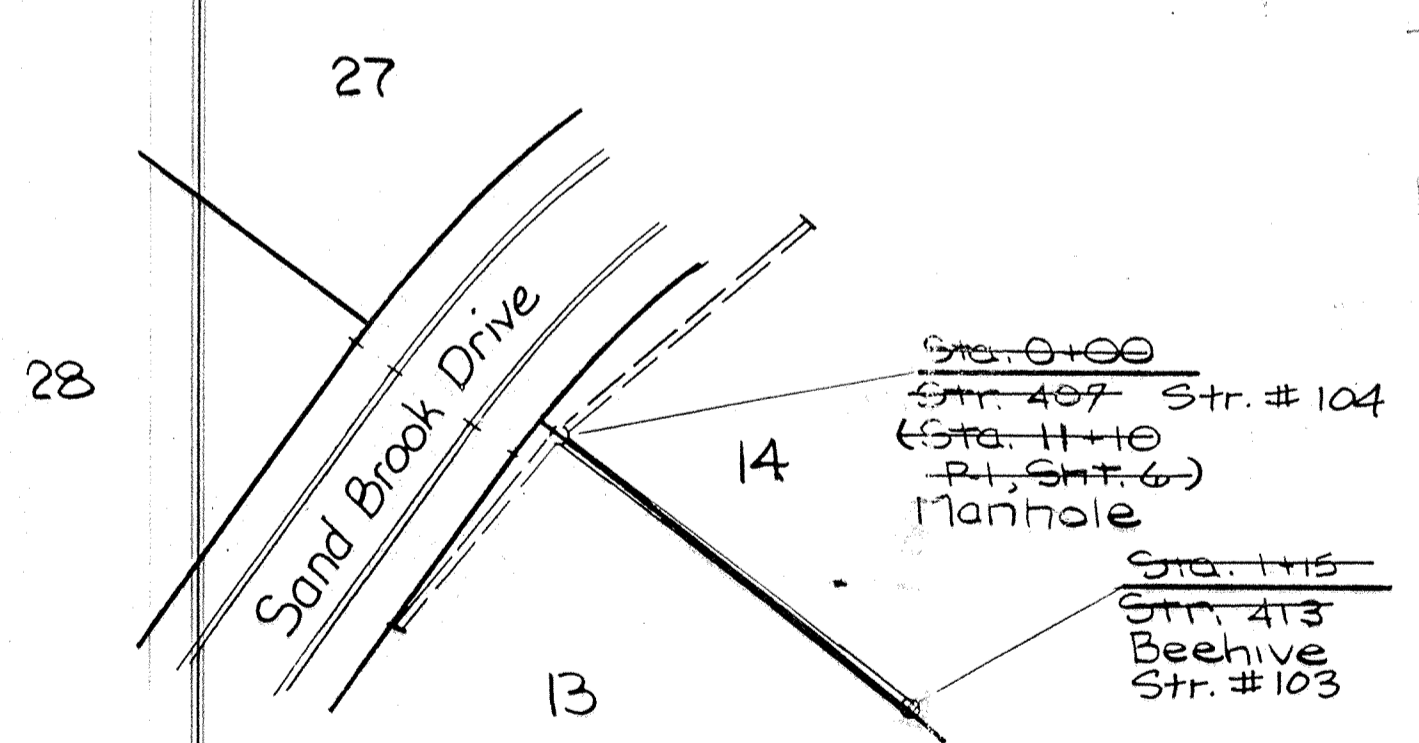
Profile Three
Str. 407/416



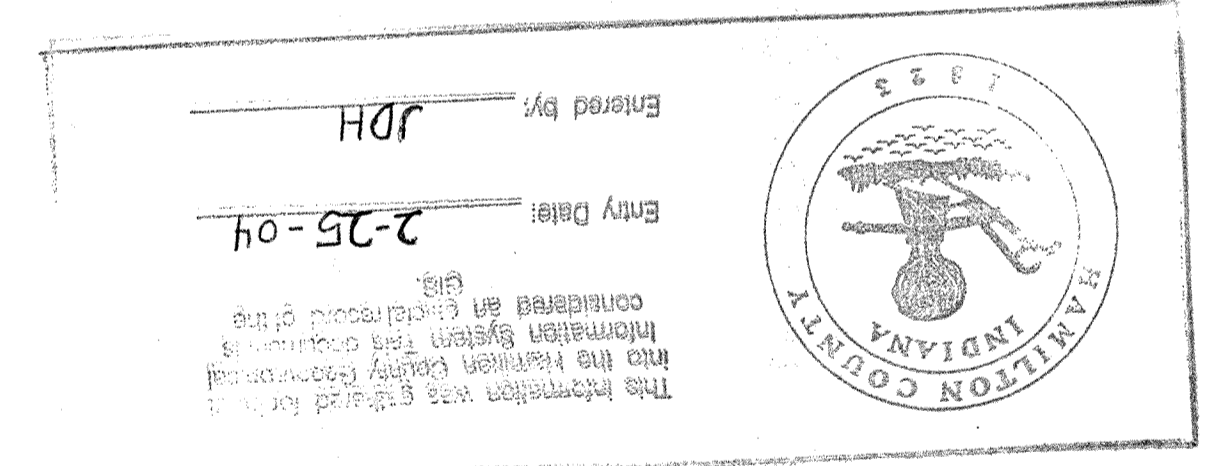
Plan One
Str. 403/413



Plan Two
Str. 405/414



Plan Three
Str. 408/416

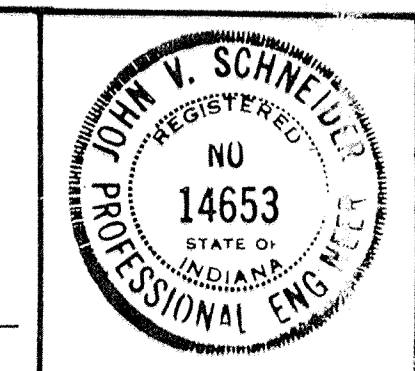


FILED
AUG 11 1994
HAMILTON COUNTY DRAINAGE BOARD
SECRETARY

Typ. Scales: Profile = V = 1" = 5'

I hereby certify that the within Record (As-Built) Drawings were prepared under my direction as a result of field survey measurements made with regard to location, size, pipe invert elevation, and casting elevation of the storm sewer structures as indicated on the plans. Additionally, ground elevations were verified as indicated on the plans in specific swale, ditch, and storm water detention areas. The base sheets for these drawings are mylar reproduces of the initial construction plans provided by P. I. Cripe, Inc.

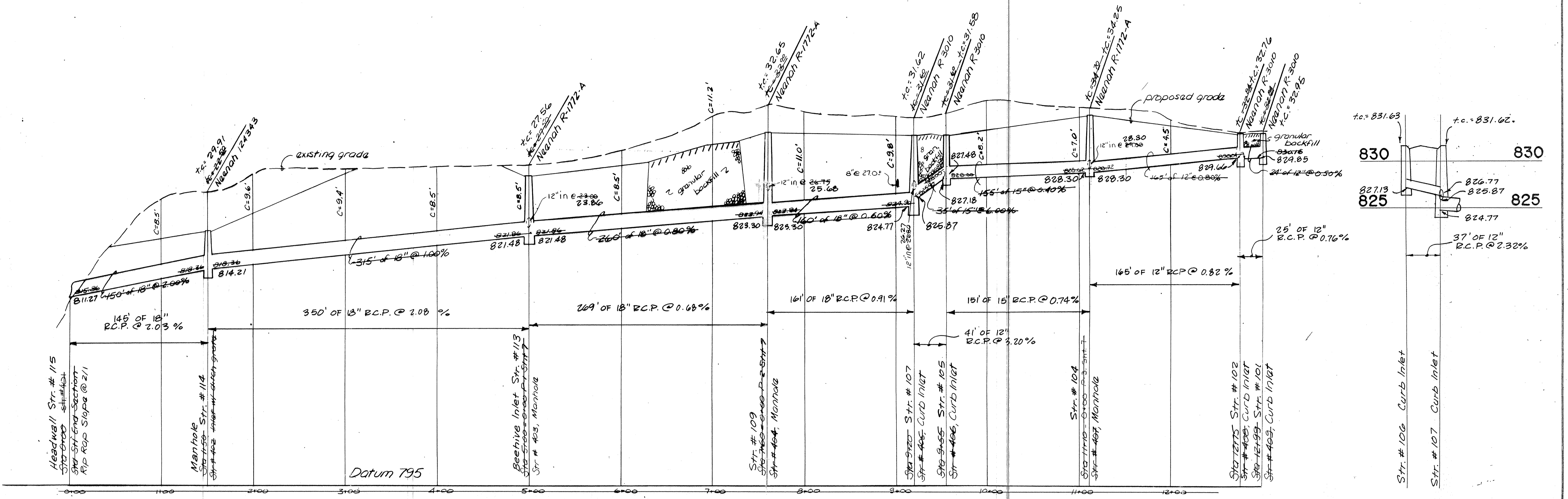
John V. Schneider



SCHNEIDER ENGINEERING CORPORATION
CIVIL ENGINEERS LAND SURVEYORS
3020 NORTH POST ROAD
INDIANAPOLIS, INDIANA 46226
TELEPHONE (317) 898-8282

PEBBLE BROOK Sec. One
STORM SEWER RECORD DRAWING
12/23/87 5/25/88

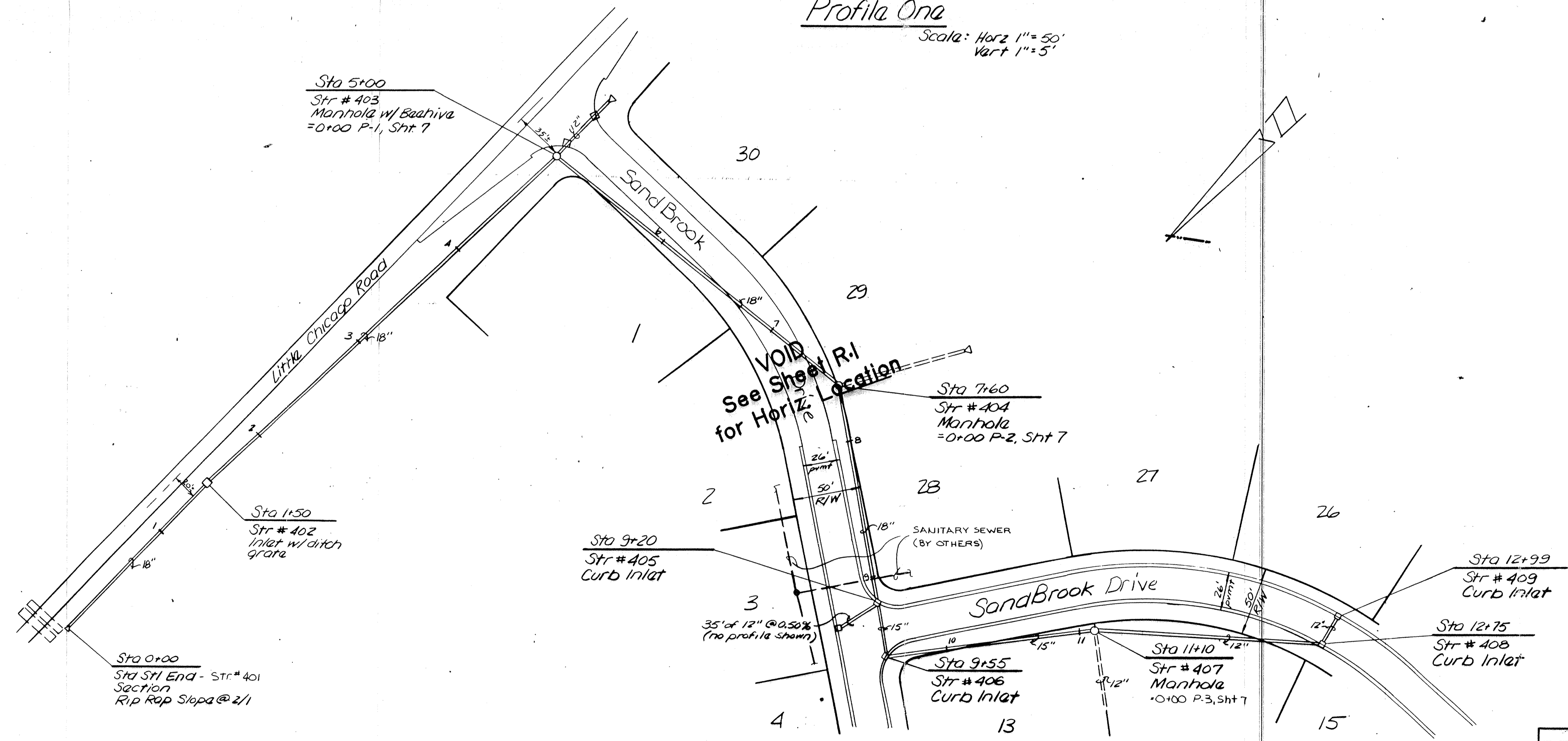
SHEET R.2
OF 9



Profile One

Scale: Horiz 1"=50'
Vert 1"=5'

"AS-BUILT PROFILE"



This information is intended for input into the Home Information System and is not to be considered a contract.

Entry Date: 2-25-04

Entered by: JDH

I hereby certify that the within Record (As-Built) Drawings were prepared under my direction as a result of field survey measurements made with regard to location, size, pipe invert elevation, and casting elevation of the storm sewer structures as indicated on the plans. Additionally, ground elevations were verified as indicated on the plans in specific swale, ditch, and storm water detention areas. The base sheets for these drawings are mylar reproduces of the initial construction plans provided by P. I. Cripe, Inc.

AUG 11 1994

HAMILTON COUNTY DRAINAGE BOARD

John V. Schneider
SECRETARY

SCHNEIDER ENGINEERING CORPORATION

CIVIL ENGINEERS LAND SURVEYORS
3022 NORTH POST ROAD
INDIANAPOLIS, INDIANA 46226
TELEPHONE (317) 898-8282

JOHN V. SCHNEIDER
REGISTERED
NO 14653
STATE OF INDIANA
PROFESSIONAL ENGINEER